



## 115 CONNETT PLACE South Orange, New Jersey

**kw** PREMIER  
PROPERTIES  
KELLERWILLIAMS.



Andrew Soloway  
Sales Associate

Cell: 973-464-8968

[andy@winterbottomteam.com](mailto:andy@winterbottomteam.com)



Elizabeth Winterbottom  
Sales Associate

Cell: 973-900-0337

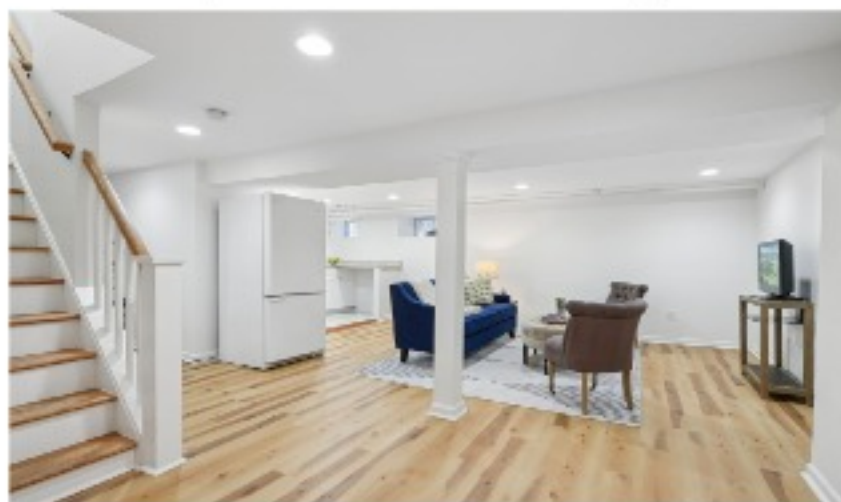
[elizabeth@winterbottomteam.com](mailto:elizabeth@winterbottomteam.com)

KW Premier Properties | 518 Millburn Ave | Short Hills, NJ 07078 | [www.ElizabethWinterbottom.com](http://www.ElizabethWinterbottom.com)





## Spacious & Sunny Colonial in a Premier Location



## OVERVIEW

4 bedroom, 2 full and 2 half bath Colonial  
Best location in town, just 1 block to South Orange Village  
7 minute walk to train station for an easy commute to NYC  
Multi- zone central air conditioning  
.21 acres of level property, fully fenced yard and port-cochere  
2-car detached garage

## FIRST FLOOR

Living room with wood burning fireplace  
Gracious formal dining room  
Eat-in kitchen; peninsula with bar seating, stainless steel appliances, breakfast nook  
Grand scale family room with custom built-ins and walls of windows overlooking rear yard  
Private home office, perfect for remote work  
Playroom/exercise room  
Spacious guest bedroom with half bath



## SECOND FLOOR

3 spacious bedrooms and 2 full baths, including primary suite with dressing room and ensuite bath

## THIRD FLOOR

Walk up bonus room which can be used as an office, playroom, den or teen hangout space

## LOWER LEVEL & EXTERIOR

Recreation room, laundry area, half bath, utilities and storage  
Fully fenced and private rear yard; ideal for outdoor play and relaxation

## LOCATION

Quiet, leafy cul-de-sac with no through traffic  
An easy walk to town, train, rec facilities including town pool, tennis courts, The Baird Center, Floods Hill for sledding and summer movie nights, the farmers market, SOPAC and more!!

