



**34 Crescent Place
Short Hills, New Jersey**



Elizabeth Winterbottom

Sales Associate

Cell: 973-900-0337

Office: 973-376-0033

Elizabeth@WinterbottomTeam.com

www.ElizabethWinterbottom.com



Andy Soloway

Sales Associate

Cell: (973) 464-8968

Office: (973) 376-0033

asoloway1@gmail.com



Set on beautifully landscaped property in The Crescent neighborhood of Short Hills, this mint condition five bedroom Colonial will please the most discerning buyer. With exceptional curb appeal and a walk to town, train and school location, this home blends traditional architectural elements with modern features, creating a warm and fresh feeling throughout.

The covered front entry leads into the foyer, flanked by the sunny living room and gracious formal dining room. Off the living room is the private home office, perfect for working from home. Towards the rear of the home is the expansive, open plan eat-in kitchen and family room with gas fireplace. Highlights of the gourmet kitchen include custom cherry cabinetry, granite countertops, high-end appliances and a charming built-in breakfast nook. The first level also features a guest suite with full bath, newly renovated mudroom and laundry room, powder room plus attached 2 car-garage.



Four bedrooms and two full baths are located on the second level. The luxurious Primary Suite offers vaulted ceilings, a gas fireplace, multiple walk-in closets and a spa-like bath with heated floors, glassed-in shower and dual vanities. Three additional family bedrooms, one with private sitting room, share a renovated hall bath with dual vanities and soaking tub and offer ample space for all.

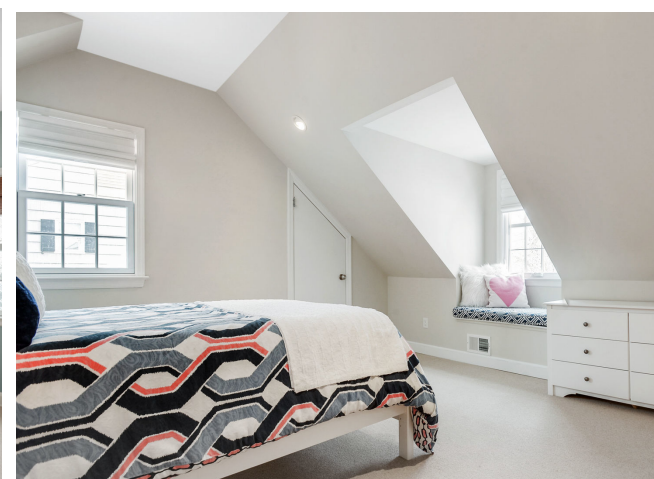
The lower level is perfect for indoor play with a step down media room, a large rec room/gym, a half bath plus plenty of storage space.

Step outside through French doors from the kitchen or family room to a deck with excellent space for al-fresco dining and entertaining. The large, level yard with fire-pit and spacious lawns is ideal for outdoor play and gardening.

As with any property, location is key and 34 Crescent Place more than delivers. The Short Hills train station, all top rated Millburn schools (Glenwood, Millburn Middle and High) and downtown Millburn are all just a short stroll away. The perfect home in the ideal location. Unpack your toothbrush and move right in!



R E S T F U L R E T R E A T S



HIGHLIGHTS

Overview

- 5 bedrooms, 3 full and 2 half bathroom mint condition Colonial
- .34 acres of park-like property
- Premier location in desirable Crescent neighborhood of Short Hills
- Walking distance to town, Short Hills station, Glenwood Elementary, Millburn Middle School and Millburn High School

First Level

- Center foyer featuring hardwood floors and crown moldings
- Gracious staircase to second level
- Living room featuring hardwood floors, decorative fireplace, custom built-ins, recessed lighting, wall sconces, French doors; painted 2020
- Dining Room featuring chair rail and easy access to kitchen; painted 2020
- Wood paneled office featuring decorative fireplace, recessed lighting, built-in bookshelves and storage cabinetry
- Gourmet Kitchen featuring center Island with bar seating, custom cherry cabinetry, granite countertops, glass tile backsplash, Viking 6-burner gas cooktop, Viking electric double wall oven, Miele dishwasher plus Fisher Paykel dishwasher drawer, Marvel under counter wine refrigerator, Dacor warming drawer, GE Monogram refrigerator, two sinks, pantry, skylights, vaulted ceiling, recessed lighting, sliders to deck, built-in breakfast nook with banquette seating and storage underneath; painted 2020
- Family Room completely open to kitchen for fabulous entertaining flow featuring gas fireplace with remote control, recessed lighting, wood floors, sliders to deck
- Guest Suite (Bedroom Five) featuring full bath with marble tile floor, pedestal sink and glassed-in shower; can be used as second home office
- Powder Room featuring pedestal sink, bead board walls and chair rail
- Mudroom (2016) featuring cubbies, built-in shelves and seating, 2 large closets, ceramic tile floor, direct access to driveway and garage
- Laundry Room (2016) featuring Shaker cabinetry, granite counters, utility sink ample storage (washer and dryer included)

Second Level

- Primary Suite; spacious Zen retreat featuring gas fireplace and Palladian window overlooking rear yard, vaulted ceiling, 2 skylights, multiple custom fitted walk-in closets
- Primary Suite Bath featuring radiant heated floor, dual marble topped vanities, oversized stall shower with body sprays, marble bench, Rohl faucets, Restoration Hardware sconces, skylights
- Bedroom Two featuring 2 California closets; painted 2020
- Bedroom Three featuring walk-in cedar closet and chair rail
- Bedroom Four with separate sitting room and pocket doors, multiple closets, ceiling fan, skylight
- Hall Bath featuring dual vanities, soaking tub, skylight and separate shower with marble seat

Basement

- Step-down media room with high ceiling
- Large recreation room with space for home gym
- Half bath with pedestal sink
- Utility room with workbench and storage room
- Second laundry room

Exterior

- Park-like property with open lawns and gardens; oversized deck overlooking rear yard
- Exterior permanent paint w/12 years on warranty-annual touchups included
- 2 car garage and additional paver parking area
- 40 amp EV (Tesla/Electric car) charging outlet on driveway (2015)

Additional Features/Upgrades

- Whole house 22k Honeywell Generac generator (2015)
- ADT security system with central monitoring ability
- 2-zone central air /2-zone forced hot air with Nest learning thermostats
- Sump pump and Jayson water softener
- Invisible dog fence surrounding entire property
- Underground sprinkler system
- Garage doors new in 2016
- Windows replaced in most of home
- 2016 renovation/addition; Tim Klesse, architect; Mike Kozas, construction - added mudroom, laundry room, primary suite bath and closets, enlarged daughter's bedroom

