



**62 Whitney Road
Short Hills, New Jersey**



Elizabeth Winterbottom
The Elizabeth Winterbottom Team
Cell: 973-900-0337
Office: 973-376-0033
EWinterbottom@kw.com
ElizabethWinterbottom.com



Resting on a beautifully landscaped property, this picturesque Colonial enjoys a prime Knollwood location. It is walking distance to downtown, Starbucks, great local shops and restaurants, the Millburn Train Station and our top-rated public schools -- Millburn Middle School, Millburn High School, and free busing to the desirable Hartshorn Elementary School.

Step inside and you'll enjoy easy elegance and renovated, modern feel that is perfect for everyday living and entertaining. From the inviting foyer, welcome guests into the living room, which features a wood-burning fireplace. Adjacent, you will find a well-placed 1st floor office with built-in cabinetry, library or music room, gorgeous bar with a 100+ bottle wine refrigerator and an over-sized formal dining room. Toward the back, the gourmet kitchen and family room with fireplace have been recently renovated to perfection.





Four spacious bedrooms, including the deluxe master suite with fabulous master bathroom, are nestled on the upper levels, offering restful sleep for everyone. Outside, the Azek deck and patio with fire pit easily support dining and entertaining, while overlooking the private, landscaped backyard.



B r i g h t a n d S p a c i o u s



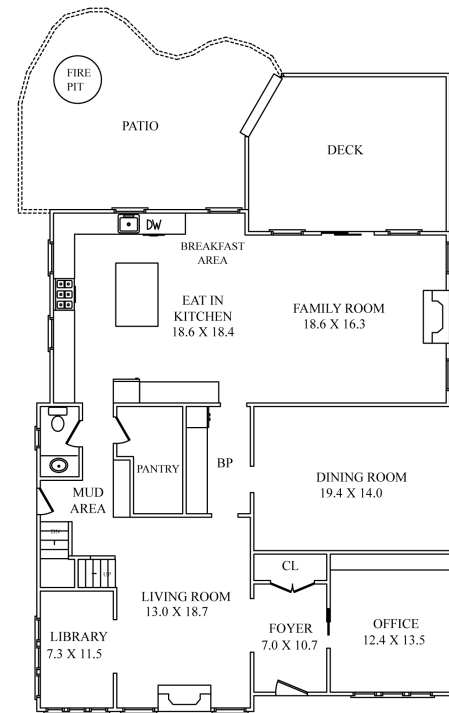
HIGHLIGHTS

LIFESTYLE

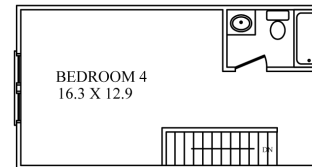
- Beautifully finished across four levels with an open-concept main living area, comfortable bedrooms and exceptional leisure space
- Interior features include hardwood floors, large foyer, living room with wood-burning fireplace, office, library or music space, over-sized dining room, crown moldings, recessed lighting, built-in speakers and thermal windows
- 1st Floor office located off the foyer, perfect for working at home remotely
- Mudroom space with built-in storage
- Fireplaces in family room, living room and master bedroom
- New dry bar added to dining room with 100+ bottle capacity SubZero wine refrigerator, Carrera marble counter and cabinets for glassware and bottles
- • Wonderfully renovated, gourmet eat-in kitchen with custom cabinets, under-cabinet lighting, new subway tile backsplash, premium stainless steel appliances (SubZero with blackboard panel, Wolfe range), new dishwasher, expanded center island with CaesarStone counters center and breakfast bar, new pendant lighting over island, separate dining area and new wood-look Italian ceramic floors with radiant heat
- Remodeled family room with new Italian ceramic floors, custom entertainment/media wall with built-in LED fireplace, in-wall surround speakers, new Pella energy efficient sliding door
- Fabulous master bedroom suite with fireplace features a deluxe full bath with soaking tub, glass shower and huge walk-in closet
- New custom window treatments in master bedroom suite, office and living room
- Recently repainted interior walls and ceilings
- Multi-zone heating and central air conditioning
- Two new hot water heaters
- Security system
- Multi-room built-in speakers indoor and outdoor speakers wired for Sonos

PROPERTY AND AMENITIES

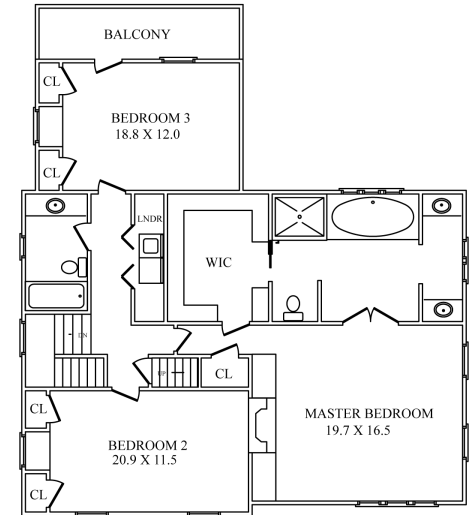
- Wood-shingled exterior and covered front portico
- Expanded garage for added interior space for parking/storage and separate exterior covered storage for patio cushions, etc.; new electric garage door opener
- Added outdoor covered bike or garden tools storage
- Underground sprinkler system
- New deck with Azek decking with lighting and outdoor speakers wired for Sonos
- New patio with BluSlate hardscaping, built-in fire pit and retaining wall with landscaping
- Professionally landscaped property with new landscape lighting in front and backyards
- Desirable Knollwood neighborhood located within walking distance to downtown, MMS, MHS, the Millburn train station, Starbuck and local restaurants and shops
- Easy access to major highways, business centers and Newark Liberty Airport



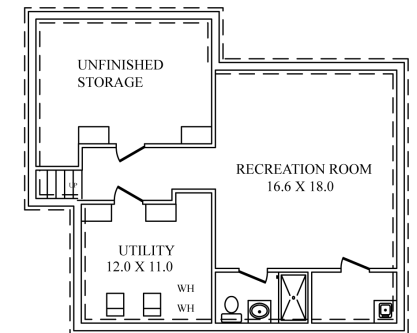
FIRST FLOOR



THIRD FLOOR



SECOND FLOOR



LOWER LEVEL

