

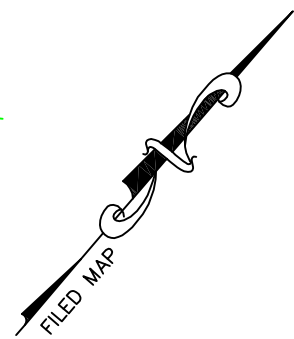
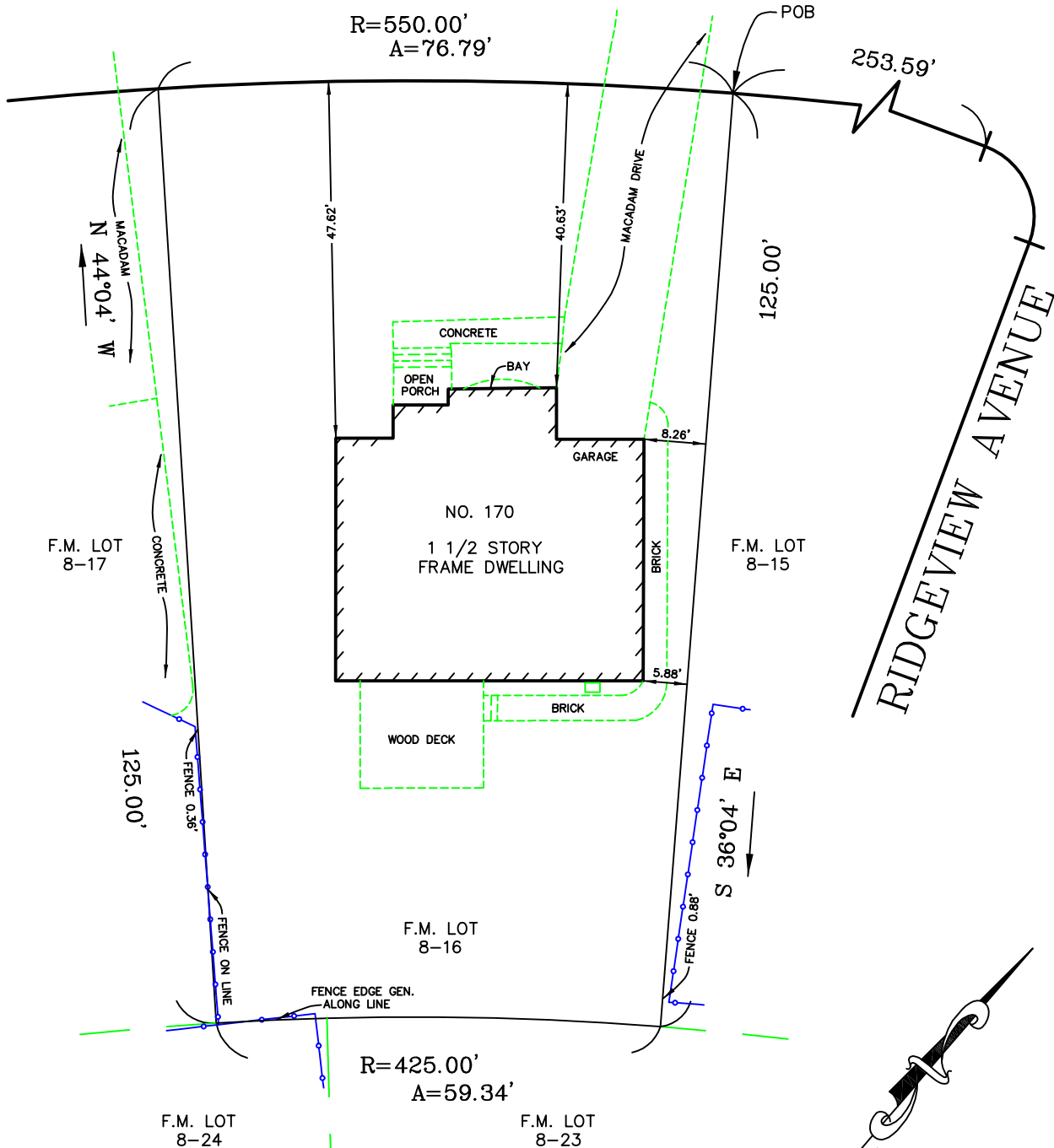
SURVEY OF LOT 8-16, BLOCK 2  
 MAP OF RUNNYMEDE ESTATES,  
 PROPERTY OF FUNCTIONAL HOMES, INC.  
 BOROUGH OF NEW PROVIDENCE, UNION COUNTY, N.J.  
 MAP FILED AS MAP NUMBER 352-C



A WRITTEN WAIVER AND DIRECTION NOT TO SET CORNER MARKERS HAS BEEN OBTAINED  
 FROM THE ULTIMATE USER PURSUANT TO P.L.2003, c.14(C45:8-36.3) AND N.J.A.C. 13:40-5.1(d)

# RUNNYMEDE PARKWAY

(50' R.O.W.)



AREA=8,507 SQ. FT.