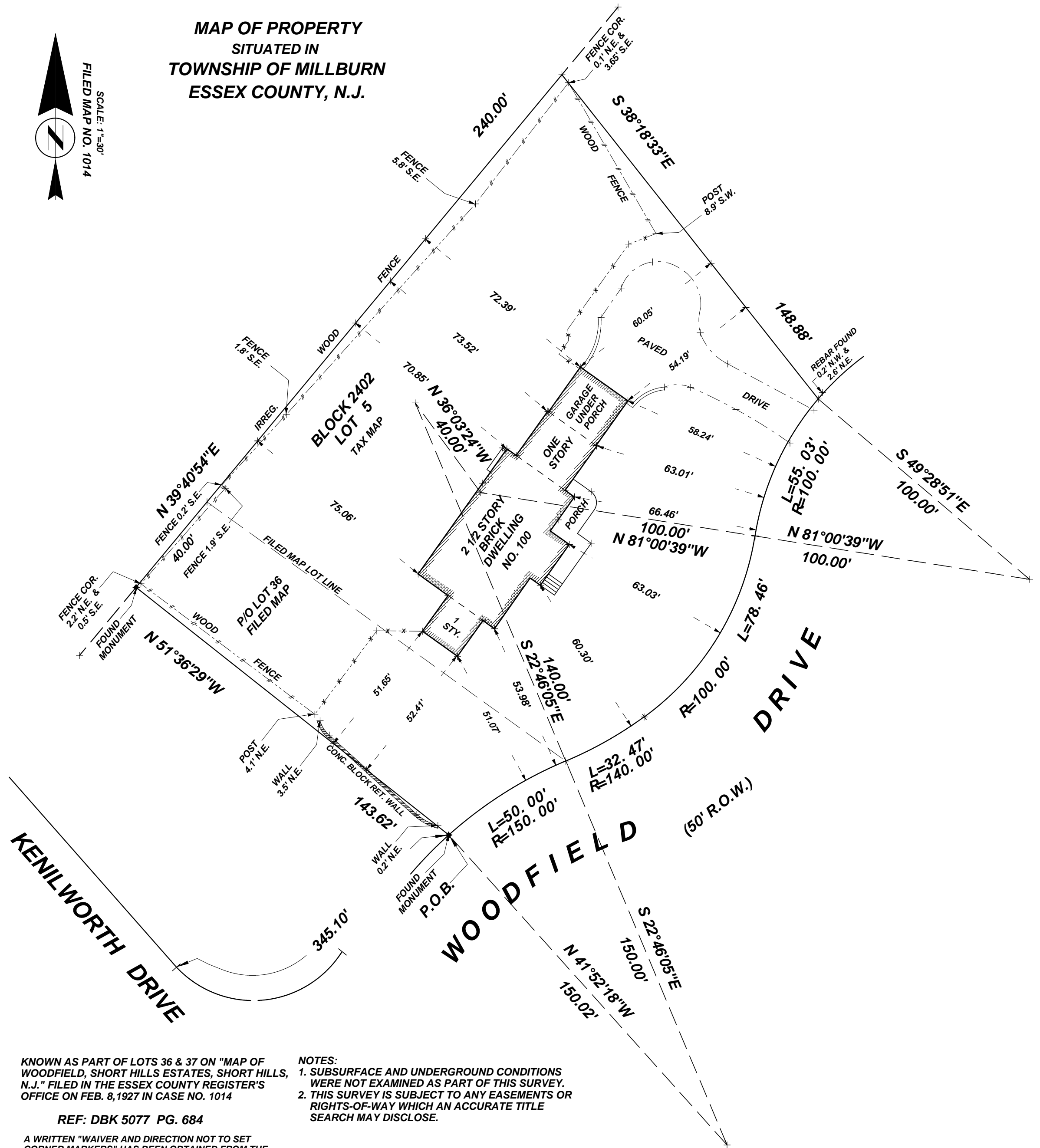


**MAP OF PROPERTY
SITUATED IN
TOWNSHIP OF MILLBURN
ESSEX COUNTY, N.J.**



KNOWN AS PART OF LOTS 36 & 37 ON "MAP OF WOODFIELD, SHORT HILLS ESTATES, SHORT HILLS, N.J." FILED IN THE ESSEX COUNTY REGISTER'S OFFICE ON FEB. 8, 1927 IN CASE NO. 1014

REF: DBK 5077 PG. 684

A WRITTEN "WAIVER AND DIRECTION NOT TO SET CORNER MARKERS" HAS BEEN OBTAINED FROM THE ULTIMATE USER PURSUANT TO N.J.A.C. 13:40-5.1(d)

NOTES:

1. SUBSURFACE AND UNDERGROUND CONDITIONS WERE NOT EXAMINED AS PART OF THIS SURVEY.
2. THIS SURVEY IS SUBJECT TO ANY EASEMENTS OR RIGHTS-OF-WAY WHICH AN ACCURATE TITLE SEARCH MAY DISCLOSE.