



9 Crest Acre Court Summit, New Jersey



Elizabeth Winterbottom
Sales Associate
Cell: 973-900-0337
Office: 973-376-0033
EWinterbottom@kw.com
www.ElizabethWinterbottom.com



This classic Summit colonial, located in the desirable Northside, is a hidden gem. From this prime location you have easy access to top-rated schools, recreation and NYC transportation. Nicely framed by tall trees, mature shrubbery and a charming white picket fence, curb appeal is only the beginning.

From the moment you step inside, you gain an inviting sense of warmth and comfort. Polished hardwood floors, decorative moldings and original detail enhance spacious rooms and a versatile decor. The designer kitchen, open to the family room, is a dream for anyone who loves to cook and entertain. Elegant granite counters and well-planned Crown Point custom cabinets are punctuated by SubZero appliances. In addition to a massive center island breakfast bar there is a separate breakfast area set near tall windows and French doors to outside.



Five bedrooms, including the master suite, are comfortably situated on the second and third levels. The master comes with a cathedral ceiling, plenty of room for a sitting area and a full master bath. The hall bath aptly serves the second and third bedrooms, while the fourth bedroom is positioned off a separate hallway with access to a private balcony and a secondary staircase to the first level sun porch. The perfect guest or in-law suite, this bedroom includes a walk-in closet and full en suite bath. The fifth bedroom is found on the third level along with access to attic storage, two cedar closets and a full bath.

The lower level is finished to include a recreation room, exercise room, full laundry room, half bath, storage and utilities, with a walk-out to the back yard.

Outside, the patio and balcony offer great space to relax and enjoy these lovely surroundings. The property backs to Canoe Brook golf course adding to the natural setting and sense of space and privacy.



PRIVATE NORTHSIDE ENCLAVE



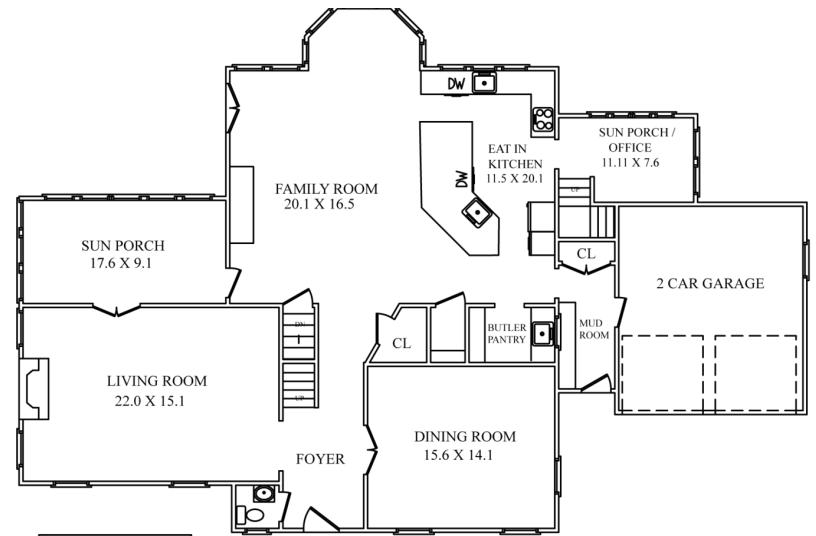
HIGHLIGHTS

LIFESTYLE

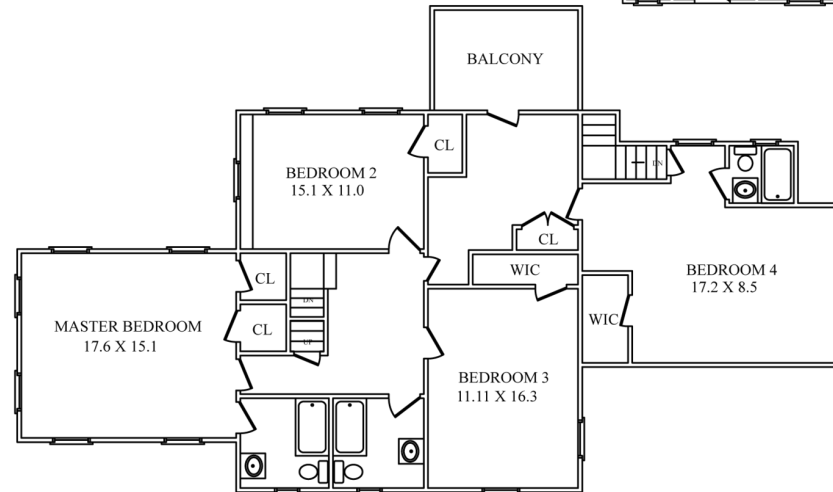
- Colonial
- 5 Bedrooms, 4 Full and 2 Half Baths
- Beautifully finished across 4 levels with an open concept main living area, comfortable second and third level bedrooms and excellent leisure space
- Interior features include hardwood floors, built-ins and crown moldings and a wood-burning fireplace
- Renovated eat-in kitchen with custom Crown Point cabinets, granite counters, subway tile backsplash, under-cabinet lighting and high end appliances including Miele dishwashers and SubZero refrigerator
- Master suite with full master bath, second level guest bedroom with en suite full bath and third level suite with nearby full bath
- Central air conditioning
- Full house built-in generator

EXTERIOR

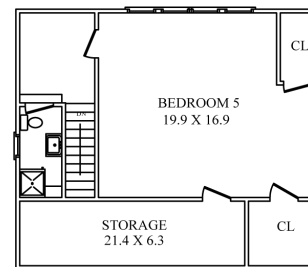
- Wood-shingled exterior
- Attached two car garage
- Patio and second level balcony
- Fenced backyard overlooking golf course
- Professionally landscaped property
- Located in the desirable Northside neighborhood, close to top-rated schools, shopping, recreation, and NYC commuter trains
- Easy access to major highways, business centers and Newark Liberty International Airport



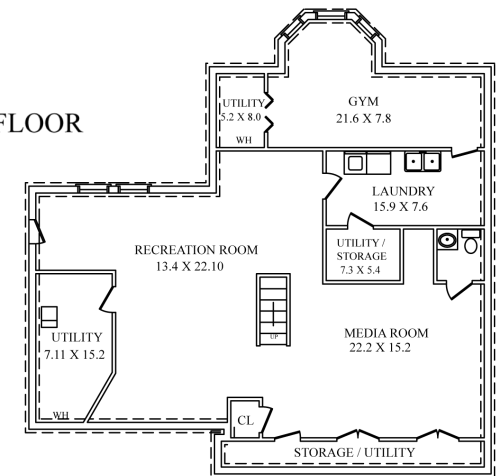
FIRST FLOOR



SECOND FLOOR



THIRD FLOOR



LOWER LEVEL