



49 SEMINOLE WAY

SHORT HILLS | NEW JERSEY

[WWW.49SEMINOLEWAY.COM](http://www.49SEMINOLEWAY.COM)

kw PREMIER
PROPERTIES
KELLERWILLIAMS.

ELIZABETH WINTERBOTTOM
SALES ASSOCIATE

Office: (973) 376-0033

Cell: (973) 900-0337

EWinterbottom@KW.com



ANDREW SOLOWAY
SALES ASSOCIATE

Office: (973) 376-0033

Cell: (973) 464-8968

asoloway1@gmail.com



Resting on nearly half an acre of professionally landscaped property, this mint condition, completely renovated 5-bedroom custom home enjoys a prime spot in the prestigious Deerfield neighborhood of Short Hills. Mature trees, expansive lawns and a covered front porch create exceptional curb appeal.

Step inside the entrance foyer and be greeted by expansive living spaces. Gas fireplaces enhance both the elegant living room and family room, while the spacious dining room will be the scene of elegant dinner parties with family and friends. The gourmet chef's kitchen with granite countertops, center island, breakfast bar, Viking 6-burner cooktop and SubZero refrigerator acts as the hub of the home. The adjoining breakfast room with a wall of windows overlooking the backyard is completely open to the family room, allowing for both large-scale gatherings and intimate dinners and relaxation.





Four bedrooms and three full bathrooms occupy the second and third levels, ensuring privacy and comfort for all. The spacious and elegant master suite replete with dressing room, customized walk-in closet and ensuite bath with steam shower, jetted tub and dual vanities will rival any 5-star hotel. Adjoining the master bedroom is an office and large exercise room with convenient laundry area.

The ground level offers a custom built library, an oversized two-car garage with direct access to the mudroom with



cubbies and benches for storage, an additional laundry room and a powder room. The lower level offers the perfect escape with a finished recreation room, the fifth bedroom suite with full bath and plenty of storage space.

Step outside, where the large Azek deck and paver patio offer excellent space for al-fresco dining and entertaining. Beyond, the deep, level and expansive backyard is perfect for active play and gardening.

As with any property, location is key and this fine home more than delivers. Situated in the highly desirable Deerfield neighborhood, 49 Seminole Way is just a stone's throw from upscale shopping, recreation, top rated Millburn schools and NYC commuter trains. This pristine home will allow you to enjoy life at its finest!



HIGHLIGHTS

LIFESTYLE

Interior Features

- Five bedroom, four full and one half bath custom home on .46 level acres

Main Level

- Gracious Entry Foyer with 9'6" ceilings, 2 coat closets and oak flooring with ribbon inlay
- Spacious Living Room featuring coffered ceiling, gas fireplace and recessed lighting
- Banquet sized formal Dining Room with tray ceiling, Venetian plaster walls and cove lighting
- Family Room with vaulted ceiling, gas fireplace with carved wooden mantle and recessed lighting
- Gourmet Eat-In Kitchen with granite center island with bar sink, granite breakfast bar, cherry wood cabinetry, Viking 6-burner cooktop, Thermador custom designed hood, SubZero refrigerator, Dacor double wall ovens with convection feature, KitchenAid dishwasher and microwave, wine rack, skylit breakfast area with vaulted ceiling, sliding glass doors to deck

Second and Third Levels

- Master Suite, comprised of spacious bedroom with tray ceiling, bay window, custom fitted walk-in closet, dressing room with built-ins, vaulted ceiling master bath with steam shower, jetted tub and dual vanities
- Three Family Bedrooms all with custom fitted closets, one with ensuite bathroom
- Hall Bathroom with glass shower and separate tub
- Linen closet
- Office
- Large Exercise Room with mirrored wall and sitting area
- Additional Laundry Room

Lower Level

- Library with custom bookshelves
- Mudroom with cubbies and drawers for plenty of storage

- Powder Room
- Laundry Room with utility sink and Samsung washer/dryer
- Attached oversized 2 car garage with automatic door
- Oversized recreation room
- Fifth Bedroom with walk-in closet and full bath
- Storage Room
- Utility Room

Exterior Features

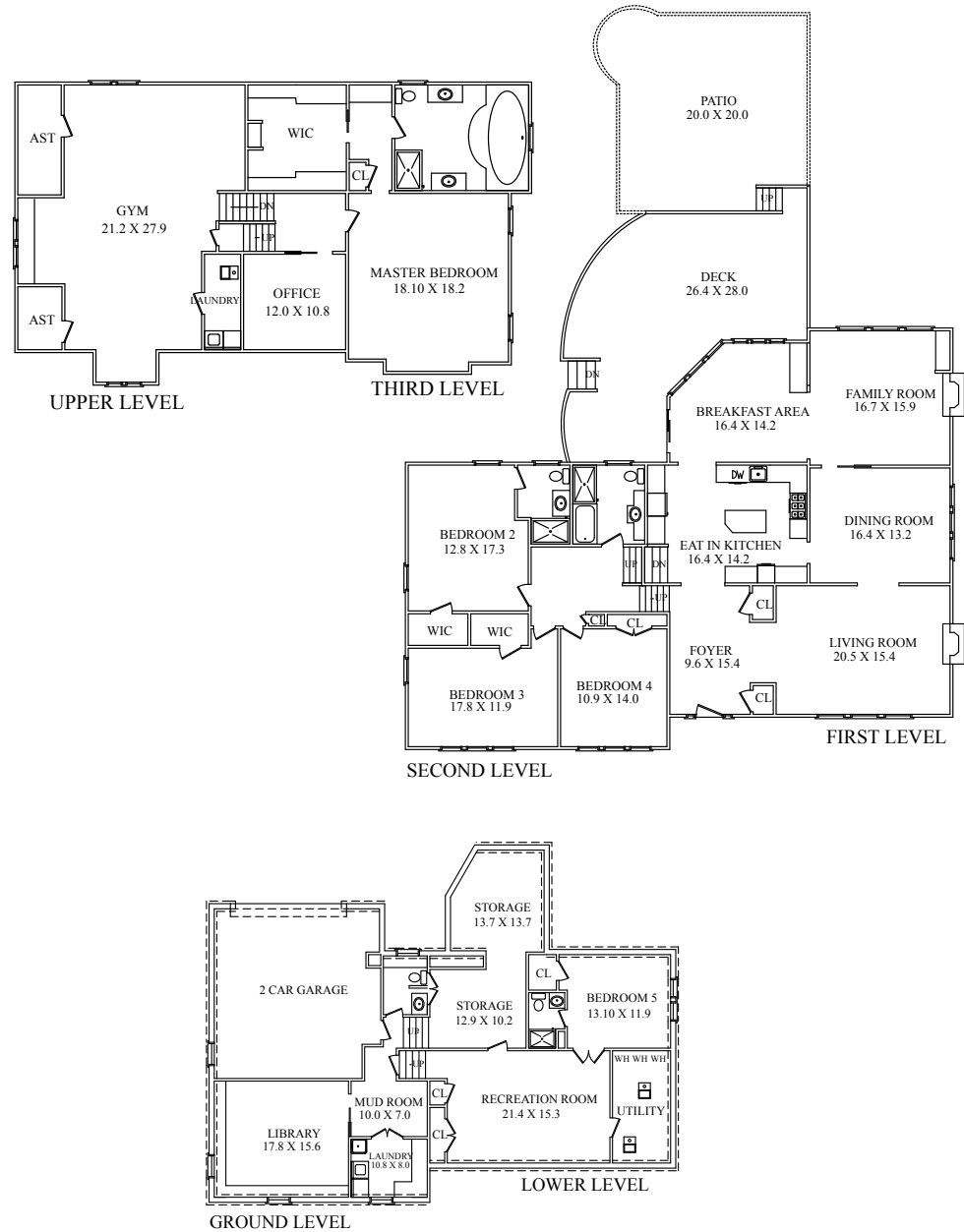
- Front porch, covered entry with barrel vaulted portico
- Azek long-life deck directly off the kitchen
- Paver patio
- Paver walkways to front door
- Spacious backyard with mature trees, specimen shrubbery and expansive lawns
- Underground sprinkler system
- 2-car attached garage with rear facing entry, plus additional parking for multiple cars

Other features

- Multi-zone central air conditioning
- Multi-zone heating
- Radiant heated floors on bedroom levels
- Pella Thermal windows and doors
- Built-in sound system with speakers in ceilings and walls
- Generator ready / portable generator included
- Incredible gym/exercise room with mirrored wall, sitting area and dedicated laundry room

Location

- .46 level acres in desirable Deerfield Elementary district
- Short drive to either Short Hills or Millburn train station
- Easy access to major highways, Newark Airport and NYC



Copyright© 2003-2018 VISUAL MARKETING & DESIGN www.VisionNJ.com 973-845-2448 All rights reserved. Reproduction in part or whole without permission is prohibited. Information contained in this brochure is deemed reliable but should be independently verified by the buyer(s). REAL ESTATE BROKERS and agents acting on their behalf for the purpose of creating this brochure are not responsible for any typographic errors, misprints or misrepresentations and are therefore held totally harmless. This listing is subject to prior sale, withdrawal or price changes without notice. This floor plan is provided for illustration purposes only.

