



212 SAGAMORE ROAD

MILLBURN | NEW JERSEY

[www.212SagamoreRd.com](http://www.212SagamoreRd.com)

**KW** PREMIER  
PROPERTIES  
KELLERWILLIAMS®



ELIZABETH WINTERBOTTOM  
SALES ASSOCIATE

Office: (973) 376-0033

Cell: (973) 900-0337

[EWinterbottom@KW.com](mailto:EWinterbottom@KW.com)





Majestically set on .69 beautifully landscaped acres, 212 Sagamore Road is an architecturally significant five-bedroom home that has been meticulously updated for today's lifestyle. Built in 1902 by Joy Wheeler Dow and renovated by preservationist architect John James, this property will delight the most discerning buyer with its open flow, historic detail, gracious rooms and magnificent terraces. Located in the beautiful Wyoming Historic District, it is an eight-minute walk to the Millburn station for direct trains to NYC.

Inside the spacious center hall foyer you find a sweeping staircase with Palladian windows overlooking the rear garden. The foyer opens onto the central rooms of the home through wide archways that can be closed with French and pocket doors for privacy. A grand living room with an intricately carved fireplace mantel adjoins a formal dining room with bay windows overlooking the garden. Original leaded glass windows adorn the family room, which features an archway, original fireplace mantel, built-in cabinets and bookshelves. Beyond the family room lies the sunroom with Brazilian cherry floors, walls of Palladian windows, vaulted ceiling and French doors to the terrace.







The heart of this home is its stunning gourmet kitchen with professional grade appliances, honed Carrara marble countertops, large center island with bar seating, coffered ceilings, graceful fireplace, and bay windows. The ample kitchen storage is supplemented by the butler's pantry, which has been retrofitted as a modern workspace. Rounding out the first floor is a powder room, mudroom and tiled side entry foyer leading to the terrace.



Five bedrooms and three full bathrooms are found on the second and third levels of the home. The two-room master suite encompasses a bedroom with curved bay, separated by pocket doors from a sitting room with multiple closets and French doors to the wraparound balcony. The four other bedrooms with lovely views offer excellent living space and ample closet space.

The property surrounding the home features large open lawns, mature trees, established English gardens, winding walkways and a spectacular elevated bluestone terrace. From the terrace, a red brick pathway leads to the detached two-car garage.

212 Sagamore Road is a rare find in an ideal location.





# HIGHLIGHTS

## LIFESTYLE

### Interior Features

- ♦ Five bedroom, three full and one half bath Georgian Revival, built by renowned architect Joy Wheeler Dow in 1902

### Main Level

- ♦ Gracious entry hall with crystal chandelier and a spectacular split staircase leading to a landing with Palladian windows
- ♦ Spacious living room featuring a fireplace with Greco Roman surround, bay window, and solid brass double sconces
- ♦ Family room with a parquet wood floor with Greek key inlay, leaded bay windows, fireplace, bronze oval sconces, and French doors to both the entry hall and the sunroom and entry to kitchen
- ♦ Dining room with recessed lights, glass and bronze pendant, bay windows overlooking property, and easy access to the kitchen
- ♦ Sunroom with Brazilian cherry hardwood floors, Palladian windows on three sides, vaulted ceiling, and French doors to a bluestone terrace
- ♦ Gourmet eat-in kitchen featuring Carrara honed marble counters, tile backsplash, farmhouse sink, center island with bar seating and copper sink, custom cabinetry, coffered ceilings with recessed lighting, neoclassical Fireplace surround, professional appliances including Thermador six-burner gas range with double oven and griddle, Sub-Zero French door refrigerator, bar fridge and Bosch dishwasher. Additional food pantry accessed from foyer
- ♦ Butler's pantry with Carrara honed marble countertops and backsplash, custom cabinetry and stained glass windows. Designed to function as an office, with computer and printer hook ups and built-in storage
- ♦ Side entrance with limestone tiled floor, windowed mudroom and updated powder room, both with leaded glass doors

### Second Level

- ♦ Second floor hallway with wood paneling, cupboard and linen closet
- ♦ The master suite, comprised of bedroom and sitting room, features curved bay windows, rounded corner closets, plantation shutters, multiple custom closets, pocket doors and French door access to balcony
- ♦ Wide wraparound balcony offers city views
- ♦ Large hall bath with marble tiled floor, marble top vanity, frameless glass shower, linen closet and plantation shutters
- ♦ Bedroom two features parquet wood floor, a bay window, double door closet, Dwellstudio fabric shades and ensuite bathroom with leaded glass door, marble tile floor, Carrara marble wainscoting, pedestal sink, and built in cabinets
- ♦ Bedroom three features walls of built-in removable bookshelves, a closet and a fireplace

### Third Level

- ♦ Bedroom four with plantation shutters, wool carpet, walk-in closet and an adjoining study with built-in bookshelves
- ♦ Bedroom five with plantation shutters, built-in bookshelves, closet and wool carpet
- ♦ Third floor hall bath with restored claw foot tub with shower, pedestal sink and subway tile
- ♦ Third floor storage room with cedar closet

### Basement

- ♦ Recreation room in walk-out basement
- ♦ Laundry room with Whirlpool appliances and sink
- ♦ Utility room and ample storage space

### Exterior Features

- ♦ Detached 2-car garage/converted carriage house, with loft storage and lower level garden shed
- ♦ Large bluestone terrace off kitchen and sunroom; perfect for intimate dinners or large scale entertaining
- ♦ Hand-laid brick walkways, pergola, stone walls, fencing, lawns, mature trees and garden beds
- ♦ A large level lawn with a cedar Rainbow play set

### Other Features

- ♦ Forced hot air heat. Central air conditioning on second and third levels. Pella thermal windows

### Location

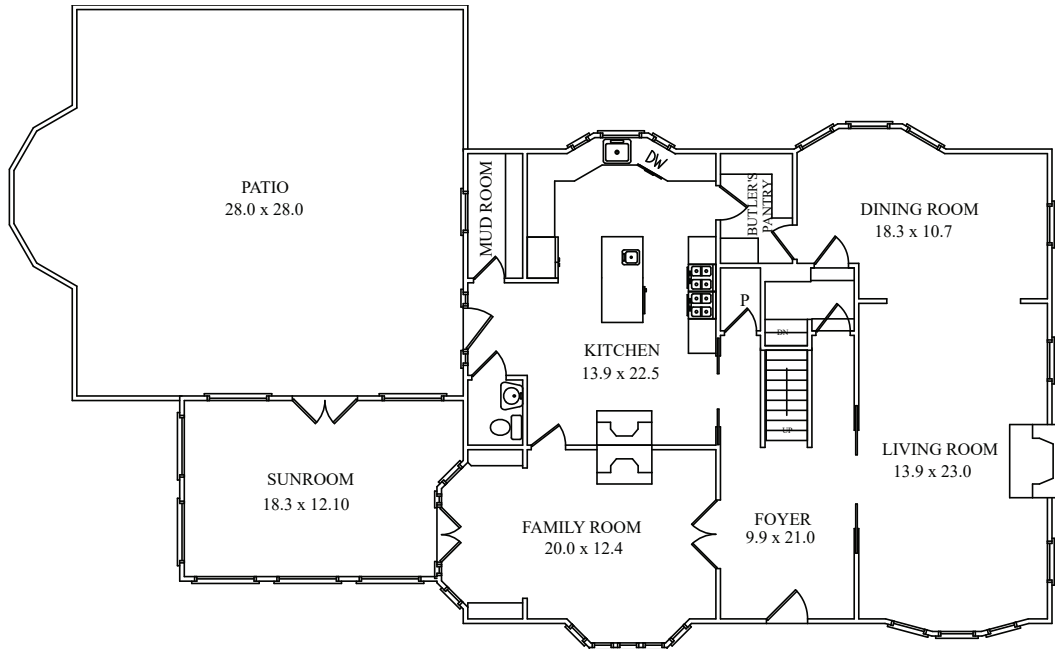
- ♦ .69 acres on desirable Sagamore Road, in the Wyoming Historic District, surrounded by other stately properties
- ♦ An 8-minute walk to the Millburn Train Station for direct service to NYC
- ♦ A quick stroll to shops and restaurants in downtown Millburn
- ♦ One mile from Maplewood's vibrant town center
- ♦ Adjacent to South Mountain Reservation and zoned for top rated schools. Easy access to major highways, Newark Airport, and NYC



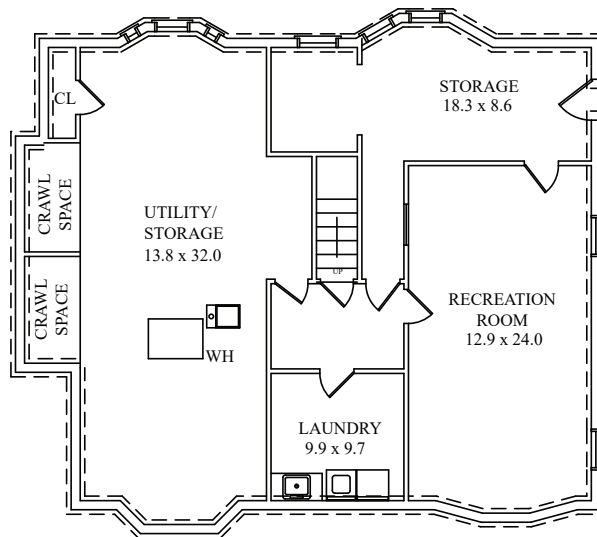
# THE FLOOR PLAN

## 212 Sagamore Road

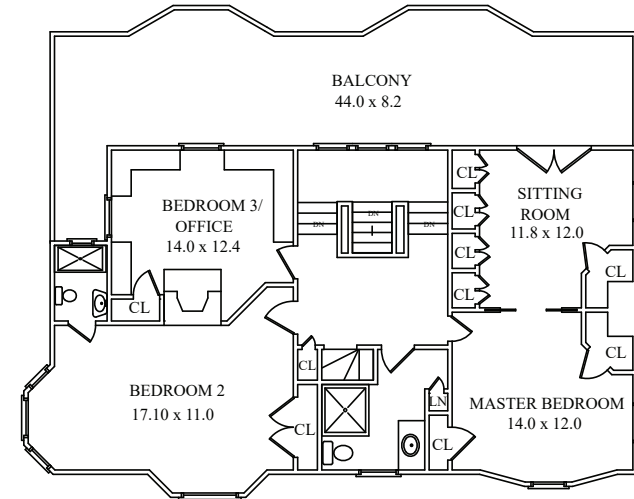
### Millburn, New Jersey



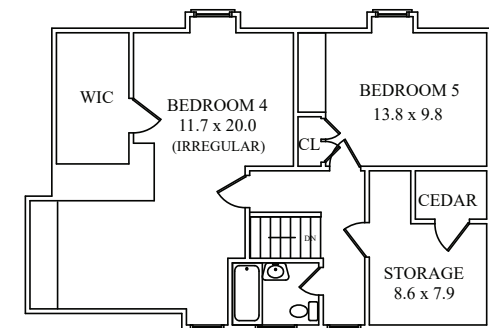
FIRST FLOOR



LOWER LEVEL



SECOND FLOOR



THIRD FLOOR

NOT TO SCALE - This floor plan is provided for illustration purposes only.  
Room positions and dimensions are approximate and should be independently measured for accuracy.